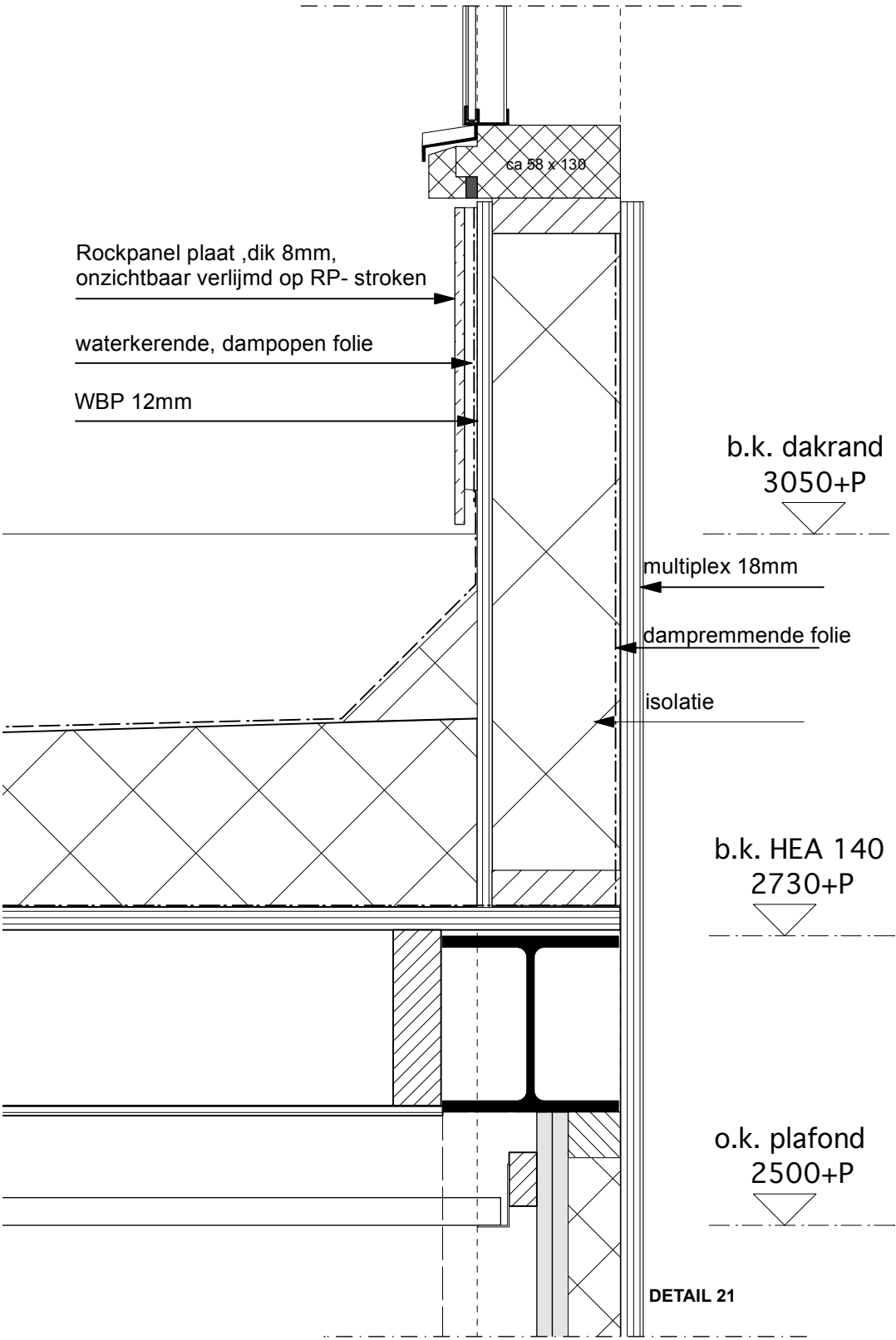


DAKDETAILS



Eiffers Van der Veen architecten	Project	370-Derkinderenstraat 44 Fase 2, Amsterdam	Schaal	1:5
	Opdrachtgever	Gemeente Amsterdam	Formaat	A3
	Onderwerp	details 20 en 21 entree bestaand	Datum	11 03 26
	Tekeningnr.	221-03	Gewijzigd	A ... B ... C ... D ...
	Fase	DO+		

T 020 - 689 1595
E info@evdvarch.nl

The image contains two technical cross-section drawings of a window frame assembly, labeled DETAIL 23 and DETAIL 24.

DETAIL 23 shows a cross-section of the window frame and glazing assembly. The frame is made of a material with a diagonal hatching pattern. The glazing is a double-pane unit with a 221 mm gap between the panes. The frame has a total width of 1628 mm, with a 12 mm gap between the frame and the glazing. The glazing unit has a width of 140 mm. The frame has a depth of 25 mm. The glazing unit has a depth of 38 mm. The frame has a base plate with a width of 28 mm and a height of 70 mm. The frame is mounted on a wall with a hatching pattern.

DETAIL 24 shows a cross-section of the window frame and glazing assembly, similar to DETAIL 23 but with a different frame profile. The frame has a total width of 1628 mm, with a 12 mm gap between the frame and the glazing. The glazing unit has a width of 140 mm. The frame has a depth of 25 mm. The glazing unit has a depth of 38 mm. The frame has a base plate with a width of 28 mm and a height of 70 mm. The frame is mounted on a wall with a hatching pattern.

HORIZONTAL DETAILS

Technical cross-section drawing of a window frame detail, labeled "DETAIL 25". The drawing shows the assembly of various materials and components.

On the left, a horizontal section shows insulation (isolatie) with a height of 221, a vertical wooden element (UNP 140) with a width of 38 x 140, and a small wooden block (28 x 70). A "kitvoeg" (glazing joint) is indicated at the bottom left.

The main vertical section shows a window frame assembly. At the top, a "merk A" label points to a component. Below it, a horizontal wooden element (67 x 90) is shown. The main frame consists of a vertical wooden element (85) and a horizontal wooden element (42). The frame is surrounded by insulation (isolatie) and a vertical wooden element (UNP 140). A "verbindingsstrip" (connection strip) is shown between the frame and the insulation. Below the frame, a "damprem" (vapor barrier) and "multiplex 18mm" are indicated. At the bottom, a "kozijnstijl bestaand" (existing window frame) is shown with dimensions "ca 56 x 130" and "ca 30 x 38".

Other dimensions and labels include:

- aftimmerlat 12 x 50mm
- 2x 12,5mm gipsplaat
- 25
- 42
- 18
- 100
- afdeklát 15 x 58

DETAIL 22

o.k. Rockpanel 40-P

8 28 12 221 140 25

38 x 140

schoonloopmat 15mm

zandcementvloer 50 mm dik

10 mm randisolatie

b.k. afgewerkte vloer P=0

dichtingsband

in het werk te storten gewapend beton

geïsoleerde kantplank 90 x 400 mm

90

bestaande fundering zodanig opstorten

150

100

drukvaste isolatieplaat

ONDERDETAIL

Effers Van der Veen architecten	<i>Project</i>	370-Derkinderenstraat 44 fase 2, Amsterdam	<i>Schaal</i>	1:5
	<i>Opdrachtgever</i>	Gemeente Amsterdam	<i>Formaat</i>	A3
	<i>Onderwerp</i>	details 22 t/m 25 entree bestaand	<i>Datum</i>	11 03 26
	<i>Tekeningnr.</i>	221-04	<i>Gewijzigd</i>	A ...
	<i>Fase</i>	DO+		B ...
1e Helmersstraat 17-C1 1054 CX Amsterdam				C ...
				D ...
T 020 - 689 1595				
E info@evdvarch.nl				